

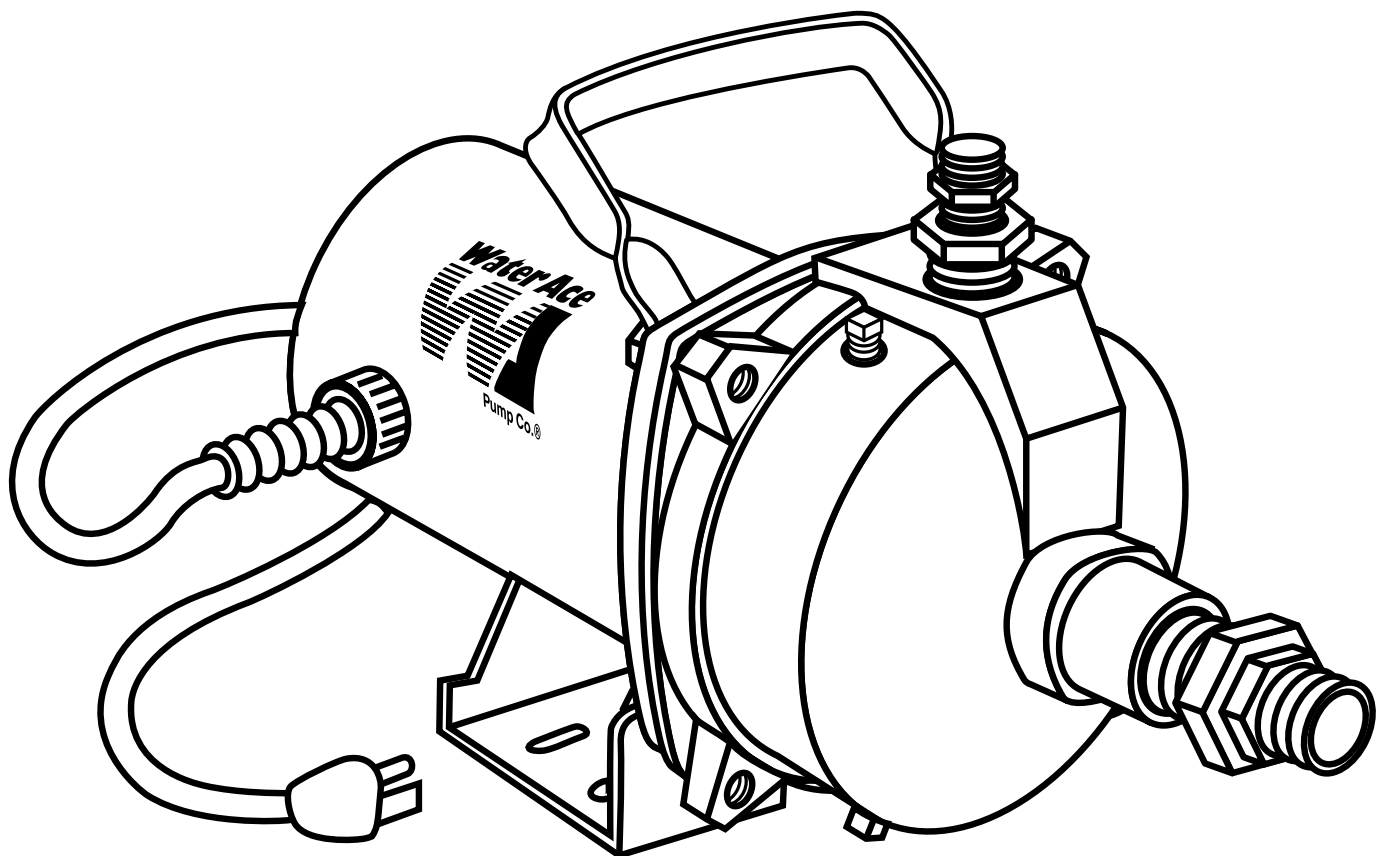


INSTALLATION MANUAL

PORTABLE UTILITY JET

CONSUMER HOT-LINE: 1-800-942-3343 • MONDAY - FRIDAY • 7 AM to 5 PM

EASTERN
STANDARD
TIME



MODEL RPJ-50
1/2 HP



WARRANTY: PRODUCT DEFECTS COVERED 12 MONTHS FROM DATE OF PURCHASE OR 18 MONTHS FROM DATE OF MANUFACTURE. RECEIPT AND PRODUCT DATE CODE REQUIRED FOR WARRANTY CLAIM.

WATER ACE PUMP COMPANY • ASHLAND, OHIO 44805-1969

23833A375

IMPORTANT INSTRUCTIONS BEFORE INSTALLATION

Failure to follow these instructions may cause serious bodily injury and/or property damage.



Warning void if product modified, drilled, painted, or altered in any way; if used to pump hot water, or to pump liquids other than water (such as but not limited to chemicals, fertilizers, flammable liquids, herbicides, mud, tar, cement, wood chips); or otherwise abused.

1. Before installing or servicing your pump, BE CERTAIN pump power source is disconnected.
2. All installation and electrical wiring must adhere to state and local codes and must be complete before priming the pump. Check with appropriate community agencies, or contact your local electrical and pump professionals.
3. **CALL AN ELECTRICIAN WHEN IN DOUBT.** Pump motor should be connected to a separate electrical circuit directly from main switch. There must be a fuse box or circuit breaker installed in this line. Plugging into existing outlets may cause low voltage at motor, resulting in blown fuses, tripping of motor overload, or burned out motor. **Refer to electrical diagrams on following page for electrical connections.**
4. For maximum safety, ground the pump motor to a circuit equipped with a fault interrupter device.
5. **Motor Grounding Instructions: WARNING** Reduced risk of electric shock during operation of this pump requires the provision of acceptable grounding. **Caution: Failure to ground this unit properly may result in severe electrical shock.** If the means of connection to the supply-connection box is other than grounded metal conduit, ground the pump motor back to the service by connecting a copper conductor, at least the size of the circuit conductors supplying the pump motor, to the grounding screw on rib, underneath wiring compartment cover. NOTE: N.E.C. requires pump motor be grounded at installation.
6. The pump is provided with a three wire cord set, with a three pronged plug. This plug must be used with a properly grounded receptacle to ensure a proper ground, the grounding means must be tested by a qualified electrician.

CAUTION



Pump must be primed! Make sure pump is full of water before running! Failure to do so will cause damage to mechanical seal, leakage and flooding!



Never run pump against closed discharge valve! To do so can cause high temperatures, pump damage, personal injury and property damage!



Hazardous voltage! Can shock, burn or cause death. Read instructions before installing!



To avoid dangerous or fatal shock hazard turn off power and ground motor before connecting motor to electrical power supply!



Do not ground to a gas supply line!



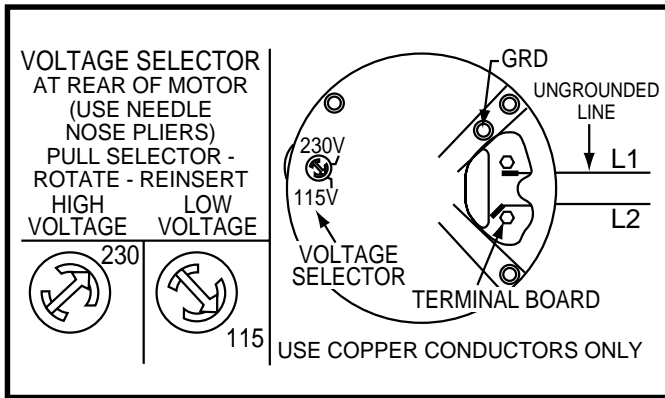
Match supply voltage to nameplate voltage. Wrong voltage can cause fire or motor damage and voids warranty. If in doubt, consult a licensed electrician.



Pump may be **HOT** to touch. Use caution!

7. Voltage of power supply must match the voltage of the pump. The 1/2 HP pump motors are factory preset to 115V. If motor is converted to 230V, an electrician should insure that electrical and power leads can handle the higher amps. (Power cord must be changed.)
8. The following may cause severe damage to pump and/or piping and will void warranty:
 - Failure to protect pump against below freezing temperatures.
 - Pumping chemicals or corrosive liquids.
 - Running the pump dry.
9. Do NOT use extension cords.
10. Do NOT pump gasoline or other flammable liquids.
11. Do NOT use this pump in or near a swimming pool, lake or pond.

IMPORTANT SELECT CORRECT VOLTAGE



DISCHARGE PRESSURE	DEPTH TO WATER CAPACITIES IN GPM			
	25'	20'	10'	0'
20	3.8	5.2	7.0	8.8
30	3.4	4.3	5.6	7.5
40	2.6	3.5	4.2	6.2
50	—	—	2.5	4.3

WIRE SELECTION GUIDE

PUMP MODEL	HORSE POWER	VOLTAGE	NAME PLATE AMPS	MAX. WIRE LENGTH IN FEET USING AWG SIZE			
				#14	#12	#10	#8
RPJ-50	1/2	115	10.6	118	189	296	464
		230	5.3	475	756	1184	1857

FUSE AND CIRCUIT BREAKER SIZE GUIDE

HORSE POWER	STANDARD LINE PLUG FUSE*		LOW PEAK - CART. TYPE FUSETRON - CART. TYPE FUSTAT - PLUG TYPE*		CIRCUIT BREAKER	
	115V	230V	115V	230V	115V	230V
1/2	20	10	12	6-1/4	20	15

*For circuits not over 150 volts to ground.

SUCTION CONNECTION

It is recommended to use a wire reinforced hose on pump inlet to prevent collapsing during operation.

It is also recommended to use a suction strainer to prevent small sediments from entering pump, which will result in pump damage and void warranty.

DRAINING FOR SERVICING OR FOR WINTER

The pump should be drained before it is disconnected for servicing or if it is in danger of freezing. To drain:

- Remove drain plug from bottom of pump case.

PORTABLE UTILITY JET PUMP INSTALLATION

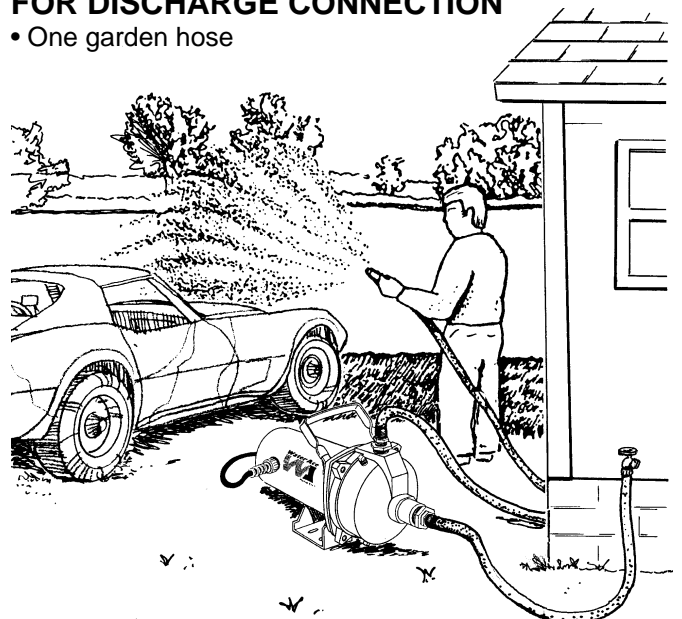
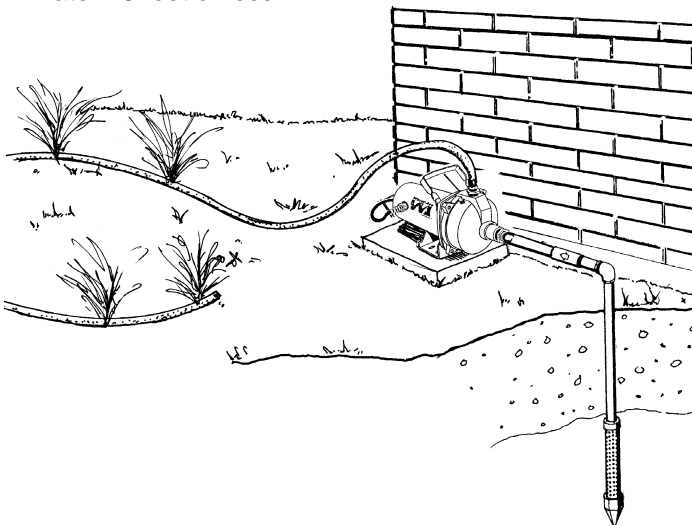
Designed for smaller residential lawn sprinkler systems. Especially convenient when used in conjunction with well-point installation, residential water pressure booster applications, and general utility water situations where additional pressure is required. The pump can lift water 25 feet or less.

FOR SUCTION CONNECTION

- One wire reinforced hose
- One strainer

FOR DISCHARGE CONNECTION

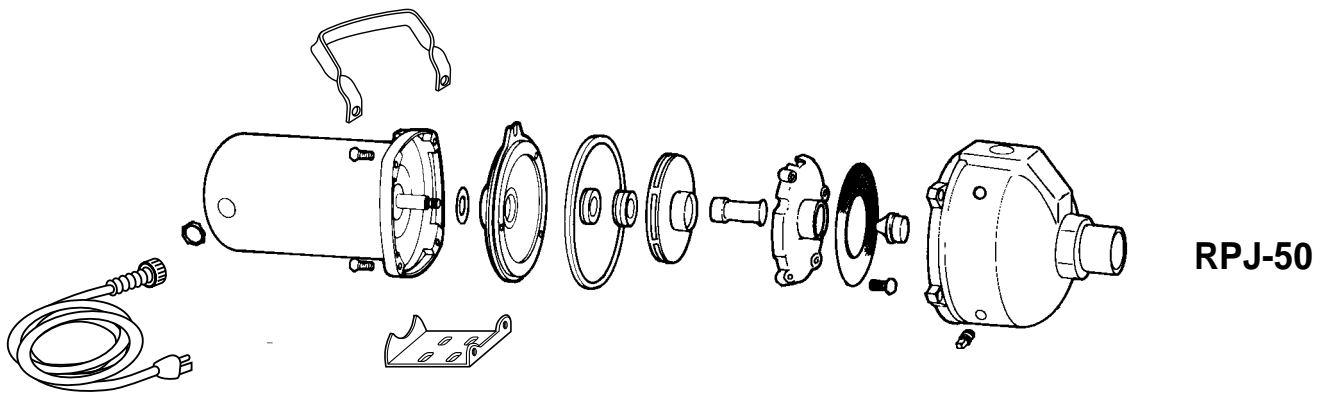
- One garden hose



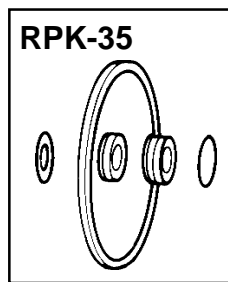
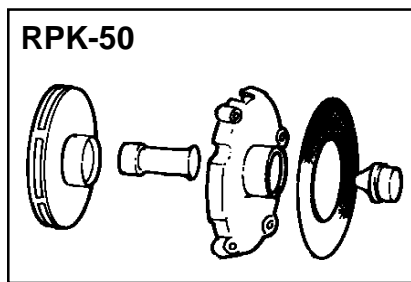
TROUBLESHOOTING CHECKLIST (CAUTION: SHUT OFF POWER TO PUMP)

PROBLEM	POSSIBLE CAUSES
Pump will not prime	<ul style="list-style-type: none"> • Not enough water. Stop motor, remove adapter, and fill case and suction line with water. • Pump wired incorrectly. • Plugged venturi tube or nozzle. • Foot valve or strainer is sitting in sand or mud, or is stuck shut, or leaks. • Low well water level. • Air leaks. Check all connections for airtightness.
Pump delivers water for a period of time, then stops pumping	<ul style="list-style-type: none"> • Low well water level. Use a water-level tester while pump is operating. • Plugged venturi tube, nozzle, or impeller parts.
Pump does not deliver rated capacity	<ul style="list-style-type: none"> • Plugged venturi or nozzle. • Low well water level. Use a water-level tester while pump is operating.
Motor overheats and shuts off (overload)	<ul style="list-style-type: none"> • Leaky foot valve or check valve.
Motor fails or does not operate properly	<ul style="list-style-type: none"> • Let us help you complete a successful installation. Call our Technical Support at 1-800-942-3343 with questions. Do not return pump directly to store.

PUMP DISASSEMBLY



REPAIR KITS



LIMITED WARRANTY

WATER ACE PUMP CO. will repair or replace for the original user any portion of a new WATER ACE product which proves defective due to materials or workmanship of WATER ACE PUMP CO. Contact the nearest authorized WATER ACE PUMP dealer for warranty service. WATER ACE PUMP CO. shall possess the sole right to determine whether to repair or replace defective equipment, parts or components. THIS WARRANTY DOES NOT COVER DAMAGE DUE TO LIGHTNING OR OTHER CONDITIONS BEYOND THE CONTROL OF WATER ACE PUMP CO.

PUMPS: Warranted 12 months from date of purchase or 18 months from date of manufacture. Receipt and product date code required for warranty claim.

LABOR & COSTS: WATER ACE PUMP CO. shall IN NO EVENT be liable for the cost of field labor or other charges incurred by any customer in removing and/or reaffixing any WATER ACE PUMP product, part or component.

THIS WARRANTY WILL NOT APPLY: (a) to defects or malfunctions resulting from failure to properly install, operate, or maintain the unit in accordance with printed instructions provided; (b) to failures resulting from abuse, accident, or negligence; (c) to normal maintenance services and the parts used in connection with such service; (d) to units which are not installed in accordance with applicable local codes, ordinances, and good trade practices; (e) if the unit is moved from its original installation location; (f) if unit is used for purposes other than for what it was designed and manufactured.

PRODUCT IMPROVEMENTS: WATER ACE PUMP CO. reserves the right to change or improve its products or any component without obligation to provide such a change or improvement for units previously sold and/or shipped.

WARRANTY EXCLUSIONS: WATER ACE PUMP CO. SPECIFICALLY DISCLAIMS THE IMPLIED WARRANTIES OF MERCHANTABILITY AND FITNESS FOR A PARTICULAR PURPOSE AFTER THE TERMINATION OF THE WARRANTY PERIOD SET FORTH HEREIN.

Some states do not permit some or all of the above warranty limitations and, therefore, such limitations may not apply to you. No warranties or representations at any time made by any representatives of WATER ACE PUMP CO. shall vary or expand the provision hereof.

LIABILITY LIMITATION: IN NO EVENT SHALL WATER ACE PUMP CO. BE LIABLE OR RESPONSIBLE FOR CONSEQUENTIAL, INCIDENTAL OR SPECIAL DAMAGES RESULTING FROM OR RELATED IN ANY MANNER TO ANY WATER ACE PUMP PRODUCT OR PARTS THEREOF. PERSONAL INJURY AND/OR PROPERTY DAMAGE MAY RESULT FROM IMPROPER INSTALLATION. WATER ACE PUMP CO. DISCLAIMS ALL LIABILITY, INCLUDING LIABILITY UNDER THIS WARRANTY, FOR IMPROPER INSTALLATION – WATER ACE PUMP CO. RECOMMENDS FOLLOWING THE INSTRUCTIONS IN THE INSTALLATION MANUAL. WHEN IN DOUBT, CONSULT A PROFESSIONAL.

Some states do not allow the exclusion or limitation of incidental or consequential damages, so the above limitation or exclusion may not apply to you.

This warranty gives you specific legal rights and you may also have other rights which vary from state to state.

In the absence of suitable proof of this purchase date, the effective date of this warranty will be based upon the date of manufacture.

Direct all Notices, etc. to: Product Warranty and Return Dept., Water Ace Pump Co., 1101 Myers Parkway, Ashland, OH 44805-1969.



Water Ace Pump Co. • 1101 Myers Parkway • Ashland, Ohio 44805-1969
1-800-942-3343 (U.S.A. only)

